

# Code: EL RNG Flowchart

**Definition:** "ELEVATION RANGE BEYOND 0% or 15% RANGE"  
**Possible Cause:** Out of range elevation count or elevation system malfunctioned.

**Note 1:** Press and hold the "0", "2" & "START" keys down at the same time, then release the "1" key. The display will read: MAINTENANCE/. Press and release the "8" key.

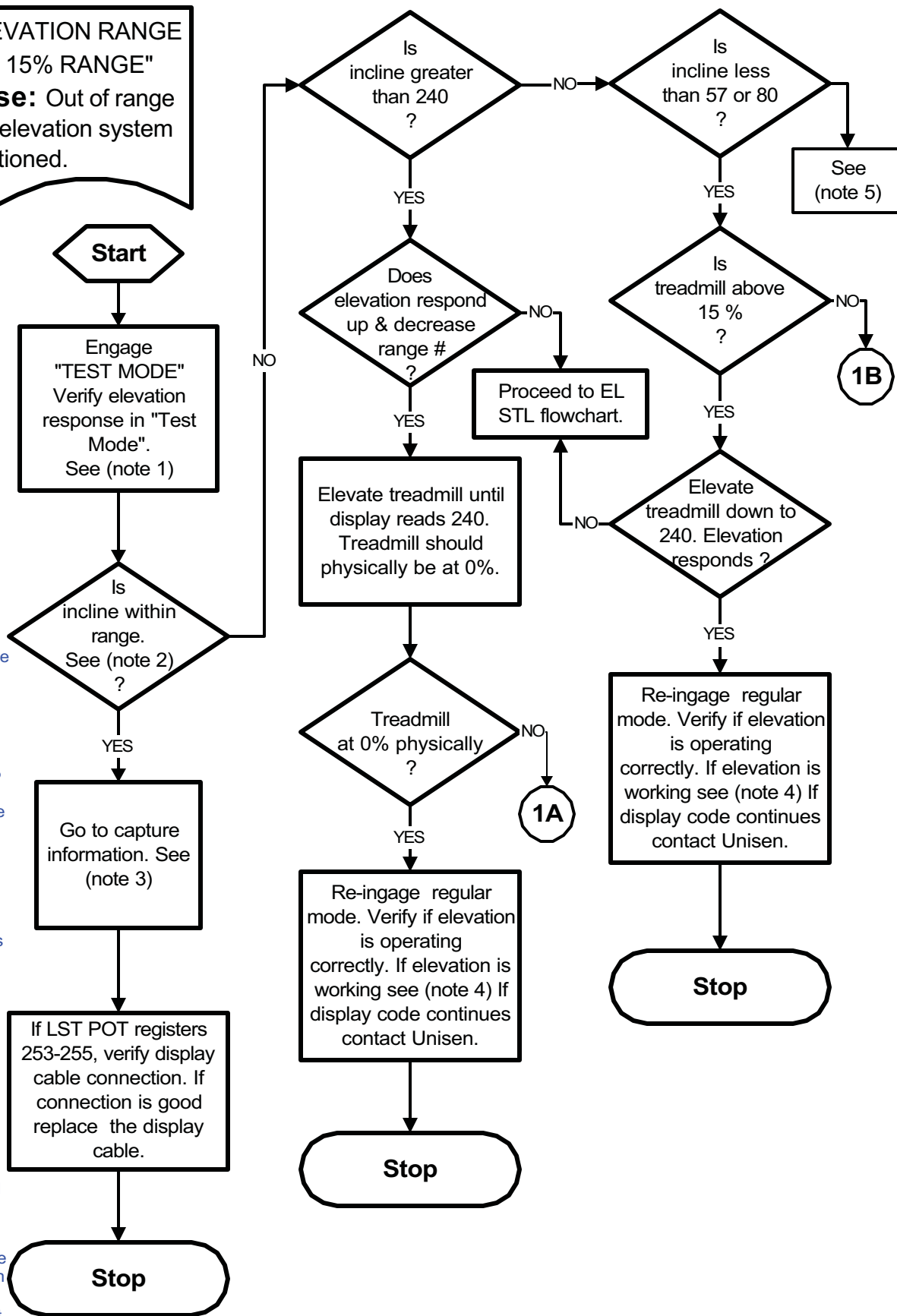
Or manually hold the "8" key and simultaneously turn the treadmill on by the on & off switch. Both methods will engage "Test Mode".

**Note 2:** In "TEST MODE" the number under "ELAPSED TIME" on the display, represents the elevation range. When physically at 0%, the range will register 240. When elevating the range will fluctuate from 240-80. Elevation range 80 represents 15% for 220v units. 57 represents 15% for 110v units. Do not elevate beyond the range.

**Note 3:** Exit out of TEST MODE. Re-engage "MAINTENANCE Mode" scroll through the menu using your elevation keys until display reads LST POT. The following variables store the condition when the last display code occurred.

**Note 4:** Engage "MAINTENANCE Mode" scroll up through the menu to the different error references by using the "UP" elevation key. Clear all error codes by pressing the "HEART" key.

**Note 5:** Thi would indicate that the elevation is within range and should be operating correctly, if not contact Unisen.



# Code: EL RNG Flowchart

